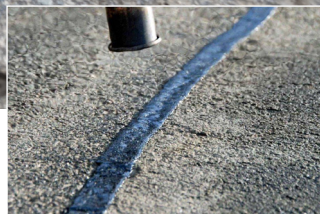


Road & surface repair



Marking the future with you

A complete solution for road and surface repair

Keep the roads safe with our innovative and complementing range of products

A worker in high-visibility clothing is using a spray gun to apply a product to a road surface. The image is overlaid with a blue tint.

Preventive road maintenance is key

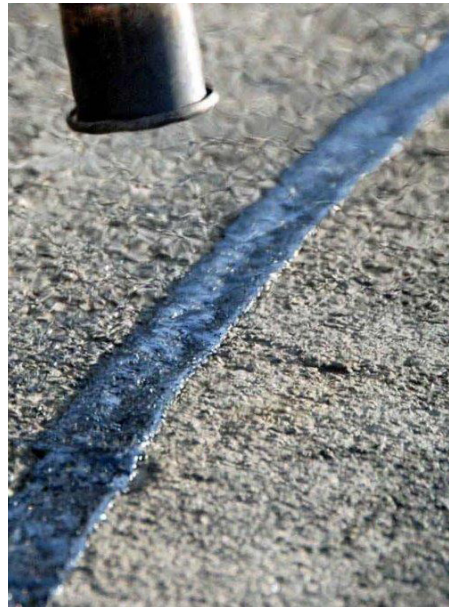
Worn and damaged roads are unfortunately not a rare sight. Potholes, cracks and other damages on the road can be caused by a number of factors including water intrusion, heavy vehicles, as well as seasonal temperature changes.

The importance of proper maintenance

In order to keep the roads safe, it is critical to keep up with proper maintenance to prevent these damages from spreading or forming. This not only helps limit the risk of extended damages, but also the need for more

extensive and costly repairs. Most importantly however, regular repairs prolong the lifetime of the road and increases safety.

Unfortunately, the fear of huge costs and long traffic shut-downs can make it seem like an immense project to get these damages fixed. But fear not, it does not have to have to be that way!



Why should you use our road & surface repair:

- A complete solution covering almost any type of road and surface repair
- High-quality products providing resilient and durable repairs
- Easy application causing no secondary damages to the road surface
- Minimal manpower and equipment needed
- Minimal closing time of traffic
- Makes it easy to keep the roads well-maintained which increases safety and prolongs the lifetime of the road

Complete repair solution

With almost 100 years of experience in road markings and innovation, Geveko Markings has developed a range of road and surface repair products for easy, efficient and durable application. Our solution consists of four different and combinable products which makes it easy for you to repair potholes, cracks and outbreaks before they turn into big and costly projects.

Easy-to-carry bags and buckets combined with a simple application process means that this solution requires a minimum amount

of resources. You can simply have the products on your vehicle and easily repair damages on the road as you see them - all year round.

Maximise your repairs – minimise your effort

Compared to methods that demand a lot of manpower and heavy or specialised equipment, this is a both user-friendly and cost-effective solution.

With a minimum of equipment required, you reduce the risk of causing secondary

damages adjacent to the repair. Furthermore, you limit closing time of traffic during road maintenance as the repairs can be done very quickly.

Application time is usually a matter of minutes, depending on extent of the repair. The route can often be re-opened to traffic after only 20 minutes, which is a major benefit as it creates less traffic congestion and CO₂ exhaustion from cars.

Fill in the cracks to keep our roads safe

BandFill™ provides effective first aid for cracks in the asphalt



Why BandFill™?

- Hot-applied sealer available in lines and rolls
- Quick and easy application
- Cost-effective solution
- Excellent surface bond
- Prevents water ingress making joints and cracks larger
- All year-round application

Cracks in the asphalt are hard to avoid as they can appear for many reasons. Whether it is water intrusion, stress from heavy vehicles or the seasonal temperature changes that is the root cause, it is important to keep up with proper maintenance and seal the cracks to prevent them from spreading.

A 'bandaid' for the asphalt

BandFill is a hot-applied sealer that can be used for sealing cracks in the road surface as well as joints and edges of repaired asphalt areas. The flexible solution is available in both lines and rolls, depending on the job at hand.

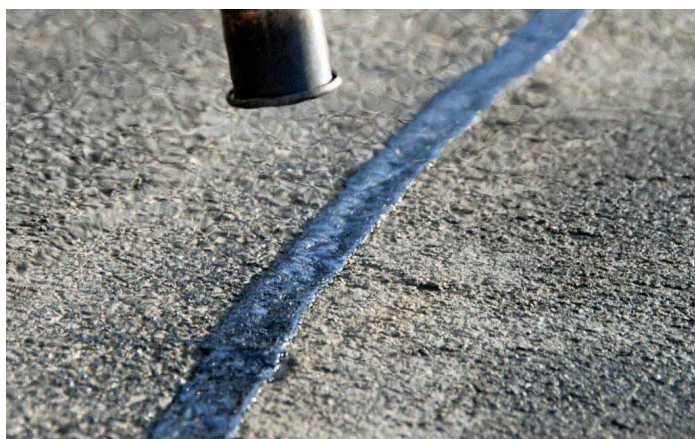
Bandfill prevents water ingress and progressive fretting which minimises the risk of the cracks getting larger. In this way you will avoid more extensive repairs, prolong the lifetime of the road, and keep costs down.

Durable, safe and flexible

BandFill has passed the HAPAS approval in the UK for a 2-year life expectancy on highways. This is just one example of the product's durability and anti-skid properties. The rolls are easy to handle and take little space in your road and surface repair kit. All you need for the application is in fact a heat torch.

BandFill is compatible with all asphalt surfaces and with the use of a primer, it can also be installed on non-bituminous surfaces (e.g. concrete, bricks and cobble stones).

Bandfill can be applied all year round, and adhesion to the bituminous asphalt surface is very strong. It leaves no product waste, and it is produced using recycled materials.



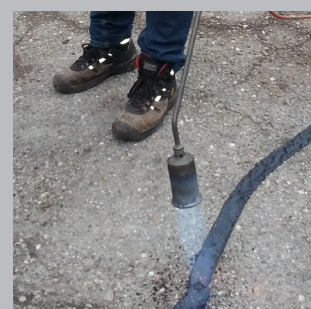
Brush away any dirt and remove moisture from the crack with a heat torch.



Roll BandFill onto the surface following the path of the crack



Bond BandFill to the crack by heating the material with a heat torch.



Sufficient heat has been applied when the material starts to bubble.